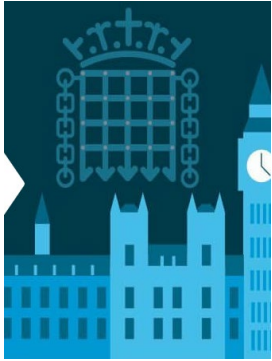


Policy Context

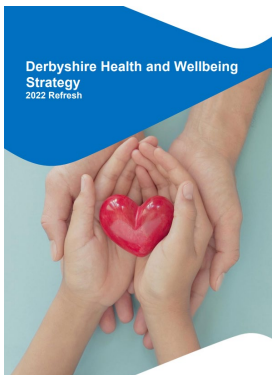
The development of this strategy has been informed by the following key strategic documents:



The [Health and Care Act 2022](#) introduces new legislative measures which make it easier for health and care organisations to deliver joined up care. The Act formalises the new integrated care systems (ICSs), which brings systems partners together to collectively plan health and care services to meet the needs of the local population.

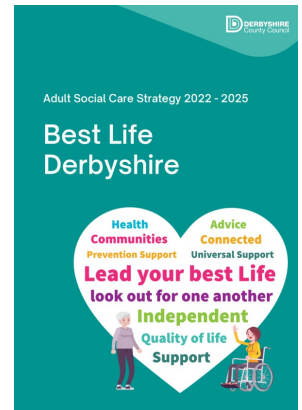
[People at the Heart of Care](#) is a government white paper setting out the government's ambitious 10-year vision for transforming support and care in England. Person-centred care is a key theme of the vision to ensure that people have choice, control and support to live independently, that they can access outstanding quality and tailored care and support and that people find social care fair and accessible.

The [Adult Social Care Strategy 2022-2025](#) notes the size of the challenge facing adult social care, our system partners and the public sector. An ageing population, more people with long-term conditions or disabilities and unfilled vacancies in the care workforce make it more imperative than ever before to work together as a whole system. A key priority is outcome focussed, supporting people to live their best lives independently at home, connected to their community and local resources.



The [Derbyshire Health and Wellbeing Strategy 2022](#) notes the importance of health and wellbeing to all of us. The strategy aligns with the aims and ambitions of the Integrated Care system for Derbyshire and helps to inform the Integrated Care Strategy. One of the five shared priorities is to support our population to live in well-planned and healthy homes. Success measures include housing affordability and ensuring adults with care and support needs live in stable and appropriate accommodation

[Joined Up Care Derbyshire](#) have developed an [Integrated Care Strategy](#), which sets out how Local Authority, NHS, Healthwatch, and Voluntary Community and Social Enterprise (VCSE) sector organisations will work together to improve the health of Derby and Derbyshire residents.



Policy Context pg 2

Other key national policies, legislation, guidance and strategic documents which have informed this strategy:

- CQC Right Support, Right Care, Right Culture: [Right support right care right culture \(cqc.org.uk\)](https://www.cqc.org.uk)
- Derbyshire County Council Plan 2023 to 2025: [Working for Derbyshire. Our Council Plan 2023 to 2025 - Derbyshire County Council](#)
- Team Up, Derbyshire: [Team Up including Ageing Well » Joined Up Care Derbyshire](#)

Links to our local housing authorities' Local Plans, housing needs assessments, corporate council plans and Place Alliances can be found on the locality pages in Appendix 1.

Accommodation for people who are homeless or for those fleeing domestic abuse is not covered by this strategy. However, more information can be found here:

- Domestic Abuse: [Strategy and policy \(saferderbyshire.gov.uk\)](https://www.saferderbyshire.gov.uk)
- Homelessness: [Derbyshire Homelessness and Rough Sleeping Strategy 2022 to 2027](#)